



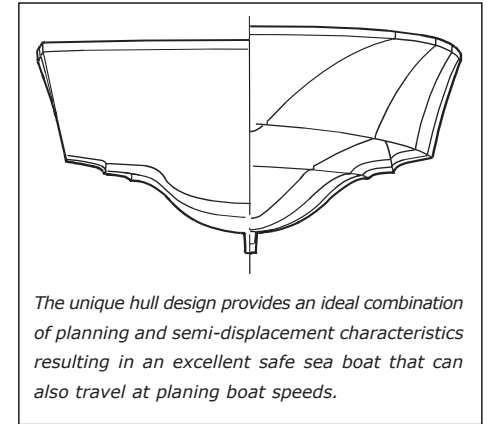
***The Corvette 340 • The world's biggest little yacht.***

- *Thoroughly safe & seaworthy*
- *Exhilarating performance*
- *Well equipped, spacious & comfortable*

**The new Corvette 340 features more space than most 40-footers.**

The all-new Corvette 340, built by the craftsmen who build the highly regarded Fleming Yachts range, is an evolutionary design based on its popular predecessor, the Corvette 320. Corvettes are known for their smooth, soft ride, voluminous interior space and the ability to handle challenging sea conditions.





*The unique hull design provides an ideal combination of planing and semi-displacement characteristics resulting in an excellent safe sea boat that can also travel at planing boat speeds.*





With an overall length of just 34ft and a wide beam of 13ft, the new Corvette 340 has one of the most spacious and voluminous layouts of any boat in its class. The huge full beam aft stateroom has a full size walk-around double berth, an en-suite shower and separate toilet, a large hanging wardrobe, dressing table and ample storage space. The forward cabin features two single berths, an en-suite shower, hand basin and toilet.

Up on the teak covered decks, getting around couldn't be easier and the generous beam of the Corvette allows for particularly wide, safe side-decks. The large flybridge and aft deck areas provide both excellent visibility and ample space for crew and guests.



Corvette 340 owners also benefit from excellent natural interior light and ventilation, good soundproofing, a well equipped galley and additional accommodation made possible in the saloon area by way of an optional converted settee/double berth.

Powered by twin diesel engines of up to 330 HP, driving conventional shafts, the unique semi-displacement hull form provides the best of both worlds in terms of speed and stability whether cruising economically at 7 knots or up on the plane at 24 knots plus. All equipment and machinery are installed to the highest standards and laid out for maximum access and convenience.



**Upper helm**

Improved layout & ergonomics provide better viewing of instrumentation & easier-to-use controls. The upper & lower helms feature all main controls.

**Huge anchor locker**

Cavernous forward storage space with 3 separate compartments, ideal for stowage of ropes, fenders, cleaning equipment etc.

**Excellent visibility**

Excellent all round visibility from both upper & lower helm positions for easier manoeuvrability & safer navigation.

**Great handling**

The proven 340 hull enjoys an excellent reputation for outstanding handling & stability, turning flat even at full speeds.

**Safe wide side decks**

Luxury teak decks fitted throughout with wide, safe side decks & substantial safety rails all round.

**Spacious flybridge**

Capable of accommodating up to 7 people with ample under-seat storage lockers. Other features include a fold down radar arch and optional Bimini covers.

**Spacious engine room**

Centrally mounted, shaft driven diesel engines located amidships have excellent accessibility for all routine or major servicing.

**Large Aft Deck**

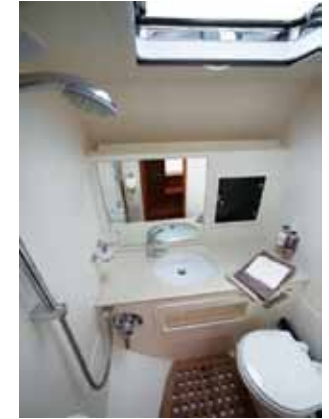
Raised aft deck with optional seating for further four people plus storage under making the whole upper deck area ideal for socialising & entertaining.

**Large swim platform**

Equipped with a fold down swim ladder & optional shower point, mounting points for tender and outboard.

**Full beam aft owner's suite**

Raised aft deck creates a full width stateroom with walk-around double berth, & separate en-suite shower & toilet facilities.



**Length:** 34' 10" (10.62m)  
**Draught:** 3' 3" (1.0m)

**Beam:** 13' (3.96m)  
**Loaded Displacement:** 23,148lbs (10,540Kg)

**Air Draught:** 11'3" (3.43m) to top of flybridge

**Fuel:** 235 USG (1,097 Litres) in two fibreglass tanks  
**Water:** 135 USG (510 Litres)

**Main Engines:** Twin Yanmar 6LP 315hp Diesel  
**Optional Engines:** Twin Cummins QSB 330Hp Diesel or Twin Volvo D6 330hp Diesel

**CE Category:** B  
**Average Headroom:** approx 6ft (1.82m)

Some photographs & images may show equipment or layouts available at extra cost. The company reserves the right to change specifications without notice or liability. 2010 © Corvette Marine (HK) Limited



**Corvette Marine (HK) Limited**  
 info@corvettemarine.com  
 www.corvettemarine.com